

**Santa Barbara County CAER
EXERCISE PLAN - CRISIS RESPONSE
draft**

INDUSTRIAL MUTUAL AID RESPONSE TEAM & EPIC EXERCISE

Time: Wednesday, August 30th, 2006 1200 – 1600 hrs.

Place: Santa Barbara County - American Red Cross Office

AGENDA:

1200-1220: Lunch served

1220-1235: Welcome and introductions

1235-1330: Objectives & Process briefing – Craig Fry & Jon Carrithers

- **Objectives: Exercise the Industrial Mutual Aid Plan & EPIC**
 - ICS & EPIC Teams will practice the development and implementation of an Initial Incident Action Plan for their site and the Santa Barbara Industrial Mutual Aid Plan (IMA Plan).
 - The EPIC Team will activate and operate a JIC
 - ICS Teams will establish ICS roles (see below) and establish the communications channels to activate the IMA Plan.
 - ICS Teams will coordinate the planning of site safety, medical treatment, search & rescue, sheltering in place, and evacuation in accordance with the Industrial Mutual Aid Plan.
 - ICS & EPIC Teams will explore capabilities and opportunities to share knowledge and resources with other companies, responders, and/or agencies.
 - Teams will identify continuous improvement opportunities
 - Leave here with some new friends and renewed friendships because you can't have enough friends in an emergency.
- **Process:**
 - Form ICS Response Teams for each "hypothetical" company and the EPIC Team
 - Provide each ICS Response Team with their Emergency Response Plan (a plan synopsis for a hypothetical business)
 - Review the scenario prelude with the ICS Response Teams & EPIC
 - Commence a real time exercise that begins 1 hour after the Earthquake Event: ICS & EPIC Teams respond to the scenario and additional inputs, and begin to develop an Initial Incident Action Plan
 - Terminate exercise and have each ICS Response Team & EPIC present their Initial Incident Action Plan to the group.
 - Capture and discuss improvement opportunities.

1330 -1350: Exercise Orientation

- Ground rules
- Prelude – Major Earthquake Event

1350-1400: Form Company Response Teams (ICS Role Assignments)

Santa Barbara County CAER
EXERCISE PLAN - CRISIS RESPONSE
draft

1400-1500: Exercise the scenario and any additional event inputs

1500-1600: Exercise Debriefing

- Review Incident Action Plans – each Team Incident Commander & EPIC Team Leader
- Response planning & capability gaps – List Best Practices and Improvement Opportunities

CONTROL TEAM: Jon Carrithers, Scenario RMS; Lynne Carrithers from Klein, DeNatale, Goldner Law in Bakerfield; **Barry Pabst, Raytheon; Dawna Ashton , American Red Cross; Michael S. Williams, Security Systems, Inc; Chris Hahn, SB County Fire, Richard Abrams, SB County OES Yolanda McGlinchey, Carpinteria/Summerland Fire**

RESOURCES: The ICS & EPIC Teams may request any resource that they know may be available for their response. The Control Team will answer requests by providing availability, ETA's, and specifications for any resource request.

COMMUNICATIONS PLAN: ICS Teams may communicate with each other via phone calls (exchange cell #'s) or face to face meetings in an area away from the Command Post. The Control Team will role-play emergency response agencies, government, public, media, NGO, contractor, and service provider contacts from the Control Room. *See the Exercise Communications Contacts List on Page 3 of this document.*

DOCUMENTATION PLAN: Each ICS and EPIC Team should document all key contacts and decisions made

EXERCISE RULES:

1. When talking on phones, please say "This is an Exercise" prior to and after every call.
2. Please ensure that all written communications are noted with "This is an Exercise" at the top of the document.
3. All communications necessary to simulate interactions with internal or external organizations (i.e., County Fire, Corporate Management, etc.) shall be directed to the Control Team. *See Phone Book below*
4. This exercise will focus on a "period of time" during an incident response. The scenario prelude will bring you up to date on the events and response actions taken prior to this period of time.

**Santa Barbara County CAER
EXERCISE PLAN - CRISIS RESPONSE
draft**

5. Weather and environmental conditions will be the actual conditions of the day.
6. If you need more information than given for clarity, notify the Exercise Facilitator. The Exercise Facilitator will coordinate with the Controllers and respond to your request. This may be in the form of a timeout called by the Exercise Facilitator.
7. We suggest that your ICS Team keeps a separate sheet of notes for capturing improvement opportunities

EXERCISE PHONE BOOK: Please direct all communications from your ICS Team to the appropriate contact number below.

Instructions:

1. You must ask for the official or person you wish to speak with.
2. State your request or purpose for calling.
3. Takes notes of facts and information provided by the Controller.
4. Communicate key facts and information to appropriate Responders &/or Public persons.
5. Contact the Exercise Facilitator to resolve inconsistencies.

CONTACT	PHONE NUMBER
Community Political Leaders Media	-
County & City Responders <input type="checkbox"/> SB Co. Fire & OES <input type="checkbox"/> SB Co. Sheriff <input type="checkbox"/> SB Police	-
Customers/Suppliers Contract Services <input type="checkbox"/> Communications Equipment <input type="checkbox"/> Transportation - Airlines, Auto, etc. <input type="checkbox"/> Food Services Shelter (Hotels, etc.)	-
Industry/Business Response & Management <input type="checkbox"/> Your Boss <input type="checkbox"/> Contacts at your Company Command Post <input type="checkbox"/> Employees & Employee Family Members	-
<input type="checkbox"/> Glory Electronics ICS Team:	-
<input type="checkbox"/> Speed of Light ICS Team:	-

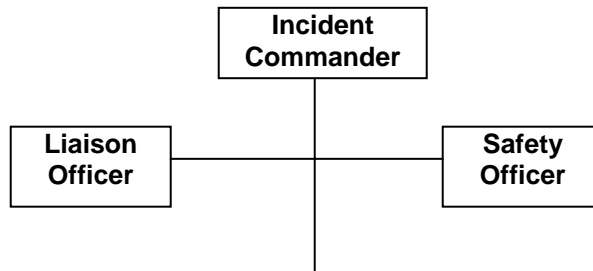
**Santa Barbara County CAER
EXERCISE PLAN - CRISIS RESPONSE
draft**

<input type="checkbox"/> Switchtronics ICS Team:	-
<input type="checkbox"/> Redundant Electronics ICS Team:	-
<input type="checkbox"/> GeoLaser ICS Team:	-
<input type="checkbox"/> WaferMagic ICS Team:	-
FAXES to All of the Above	- Hand to Exercise Facilitator
TO CALL THE EXERCISE FACILITATOR	- 661 979-0241

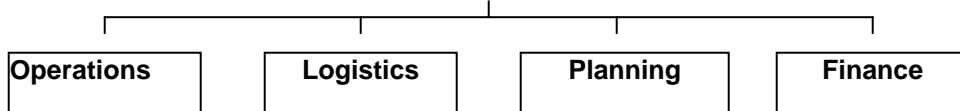
SCENARIO PRELUDE:

A major earthquake just occurred in Southern California. Your management was notified by County Fire who instructed you to perform search and rescue at your facility where it can be done safely, shelter in place for now, but to prepare people for eventual evacuation. You have been instructed to form an Incident Command Team, activate a Command Post, develop and implement an Initial Incident Action Plan for your business, and to activate the Santa Barbara Industrial Mutual Aid Plan.

Your ICS Team Structure should include the following positions at a minimum:



If you have the personnel resources you should activate the following positions (your decision which priority): dual roles.



Santa Barbara CAER EXERCISE PLAN - CRISIS RESPONSE For Control Team Only

Event #	Role Player	Time Input	Input From	Input to:	Event	Time Input
1.	SB OES	0+5	Richard Abrams County OES	EPIC Information Center	- Hiway 101 is closed at Gaviota because of falling rock. Hiway 33 is closed, and US 101 is closed near La Conchita because of pavement cracking and collapse. County OES is advising people to shelter in place until further notice in the event of aftershocks and until the damage to transportation and infrastructure systems can be assessed for public safety.	
2.	SB OES	0+12	Richard Abrams County OES	IMA Coordinator	- Hiway 101 is closed at Gaviota because of falling rock. Hiway 33 is closed, and US 101 is closed near La Conchita because of pavement cracking and collapse. County OES is advising people to shelter in place until further notice in the event of aftershocks and until the damage to transportation and infrastructure systems can be assessed for public safety.	
3.	SB OES	0+10	Richard Abrams County OES	I EPIC Information Center	- US 101 is closed near La Conchita because of pavement cracking and collapse.	
4.	SB OES	0+15	Richard Abrams County OES	IMA Coordinator	- US 101 is closed near La Conchita because of pavement cracking and collapse.	
5.					-	
6.					- Hospital closures	
7.					- Victim Triage	
8.					- Plan long term Shelter in Place	
9.	SB OES	0+25	Richard Abrams County OES	IMA Coordinator	- Release continues, wind shift is noted by all	
	Media	Various	Media	RT until a PA person is assigned then the PA person	- TV Inquiries, KEYT, KSBY, CNN, ABC, News Press, LA Times - They go to site and film. Who does RT have as spokesperson - Inquiries about fatalities and injuries, fish for names, positions, etc. - Inquires about where people are hospitalized, where they live - Interview requests with IC	
	Community		Pick a name(s) of a mythical community member	RT anyone until the RT sets up a system to manage community issues	- A number of concerned friends and family members call and go to the office buildings - Local residents call with claims. Houses and cars damaged - Calls for missing family members, some frantic - Requests to know where injured family members are being treated - Lots of people needing a system of locating loved ones calling	
	Political		County Supervisors	IC or whomever is assigned to manage Gov't Affairs	- Offers of assistance - Information requests much like media content - May try to come to command post for face time with media - May probe response effort, could be critical of mutual aid and agency response	
	Agency		OES in Lead simulating EOC	RT Ops and Planning	- Provides direction and advice to RT - Provides logistical information and may make resource decisions and	

**Santa Barbara CAER
EXERCISE PLAN - CRISIS RESPONSE
For Control Team Only**

Event #	Role Player	Time Input	Input From	Input to:	Event	Time Input
			But play County EHS, APCD, etc		arrangements but be frugal as the system is strapped	
	Agencies		FBI FAA EPA	RT IC, Ops, Planning	<ul style="list-style-type: none"> - FBI investigating if criminal involvement. Goes to command post - DOT wants preliminary info and all know details of plane and site - EPA concerned about HazMat cylinders 	
	Medical Services		See List	RT Ops, Medical Officer is one is assigned	<p>Santa Ynez Valley Hospital Solvang, Cottage Hospital, St. Francis, Amb: Mobile Life Support, Goleta Valley Community Hospital</p> <ul style="list-style-type: none"> - May role play anyone of these. Usually wait until contacted - Take the role of a Doctor, Nurse, EMT at one of the above and role play various patient cases out. Call back with patient updates, i.e. fatalities, DOA, Requests for next of kin information. 	
10.	General Services		See List	RT Logistics and Ops	MarBorg Disposal., ERA Helos, SB Aviation, Bus Rentals-SB Transportation, ABC Rent alls	

**Santa Barbara CAER
EXERCISE PLAN - CRISIS RESPONSE**